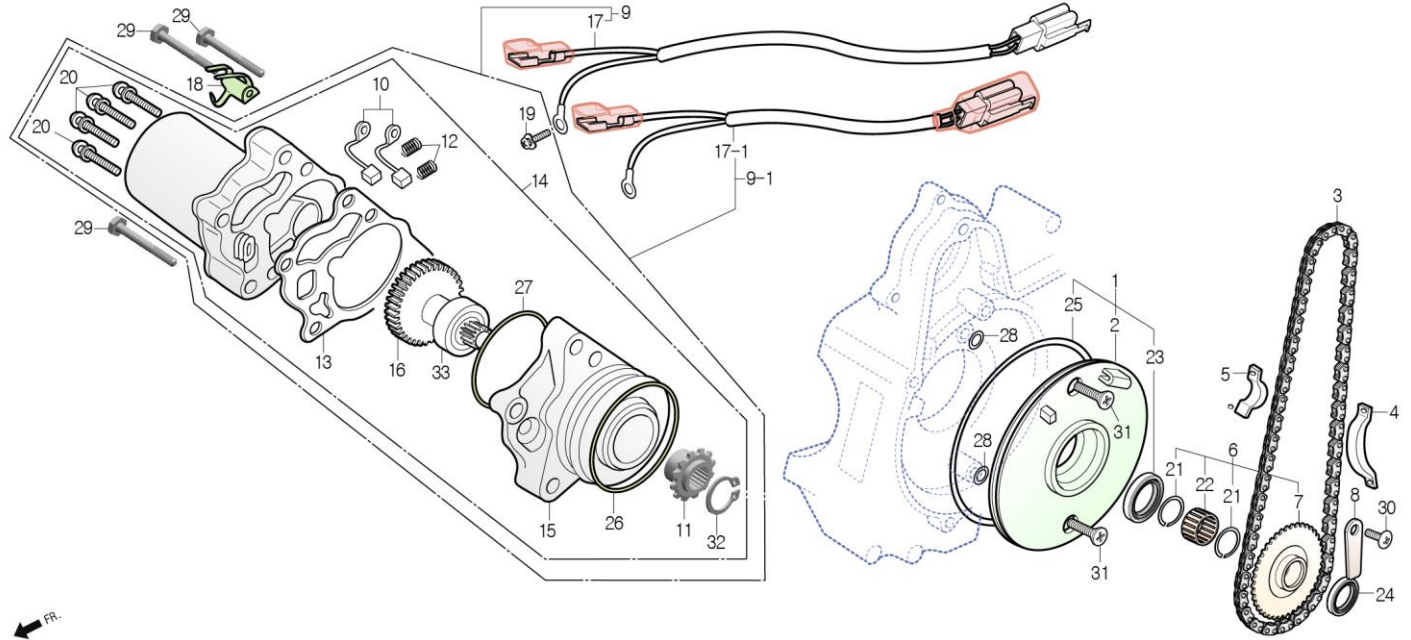


# E-09

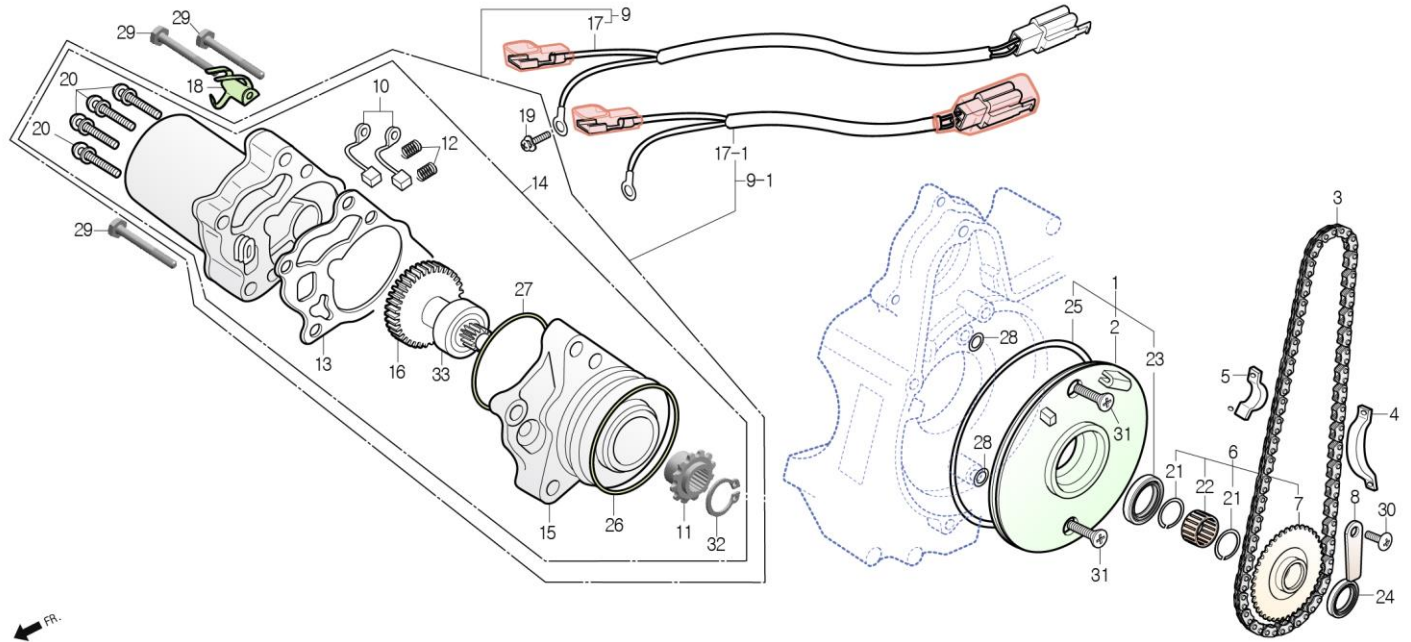
## STARTING MOTOR



Service item	FRT	Ref No.	Part No.	Description	QTY	A/S	Exch	Start Date	End Date	Start FRM.No	End FRM.No
PLATE, OIL SEPARATOR	0.7	1	1132A-CD1-6800	PLATE ASS'Y, OIL SEPARATOR	1	Y		20030320		KMYCB4BLS3C000001	
.MOTOR ASS'Y, STARTER		2	11321-CB2-7100	PLATE, OIL SEPARATE	1	N		20030320		KMYCB4BLS3C000001	
.BEARING, NEEDLE 19x23x13		3	28101-CD1-7010-M1	CHAIN, STARTING	1	N	Y	20070418	20171130	KMYCB4BLS7C003070	KMYCB4BLSJC005559
.SEAL, OIL 30x42x4.5			28101-CB4-0000-M1	CHAIN, STARTING(25H-62L)	1	Y		20171201		KMYCB4BLSJC005560	
.O-RING 107-2		4	28102-CD1-7000	GUIDE, STARTER CHAIN	1	Y		20030320		KMYCB4BLS3C000001	
		5	28103-CD1-7000	PROTECTOR, STARTER CHAIN	1	Y		20030320		KMYCB4BLS3C000001	
CHAIN, STARTING	0.5										
.SPROCKET		6	28110-CD1-7000	SPROCKET COMP., STARTING	1	Y		20030320		KMYCB4BLS3C000001	
		7	28113-CD1-7000-H1	SPROCKET, STARTER	1	N		20030320		KMYCB4BLS3C000001	
GUIDE, STARTER CHAIN	0.3	8	28117-CB2-7100	PLATE, STARTING SPROCKET SETTING	1	Y		20030320		KMYCB4BLS3C000001	
		9	31200-CB3-0000	MOTOR ASS'Y, STARTER	1	Y	N	20030320	20090824	KMYCB4BLS3C000001	KMYCB4BLSAC003473
SPROCKET COMP., STARTING	0.6	9-1	31200-CB4-0010	MOTOR ASS'Y, STARTER	1	Y		20090825		KMYCB4BLSAC003474	
.SEAL, OIL 18.9x28x5		10	31201-CB2-0040	BRUSH SET	1	N		20030320		KMYCB4BLS3C000001	
BRUSH SET	0.8	11	31202-CB2-7000	SPROCKET	1	Y		20030320		KMYCB4BLS3C000001	
		12	31204-CB2-0040	SPRING, BUSH	2	N		20030320		KMYCB4BLS3C000001	
MOTOR COMP.	0.6	13	31205-CD1-7010-M1	PACKING	1	N		20030320		KMYCB4BLS3C000001	
.CASE A, FR.		14	31210-CB4-0000	MOTOR UNIT, STARTER	1	N		20030320		KMYCB4BLS3C000001	
.GEAR COMP., DRIVEN		15	31211-CD1-7010-M1	CASE A, FR.	1	N		20030320		KMYCB4BLS3C000001	
SUB HARNESS A	0.4	16	31213-CD1-7010-M1	GEAR COMP., DRIVEN	1	N		20030320		KMYCB4BLS3C000001	
		17	32410-CB2-9010-M1	HARNESS, A SUB (L:300)	1	N	N	20030320	20090824	KMYCB4BLS3C000001	KMYCB4BLSAC003473
		17-1	32410-CB4-0010	HARNESS, A SUB (L:140)	1	N		20090825		KMYCB4BLSAC003474	
		18	32964-SC1-0200	CLAMPER, CORD	1	Y		20090702		KMYCB4BLSAC003397	

# E-09

## STARTING MOTOR



Service item	FRT	Ref No.	Part No.	Description	QTY	A/S	Exch	Start Date	End Date	Start FRM.No	End FRM.No
		19	45319-CB2-0030	SCREW, WAVE WASHER	1	N		20030320		KMYCB4BLS3C000001	
		20	90115-CD1-7000	SCREW, WASHER, 5x30	4	N		20030320		KMYCB4BLS3C000001	
		21	90464-CB2-7010-M1	CIRCLIP, INTERNAL, 23mm	2	N		20030320		KMYCB4BLS3C000001	
		22	91005-CB2-7010-M1	BEARING, NEEDLE(K19x23x13A)	1	N		20030320		KMYCB4BLS3C000001	
		23	91201-CD1-6910-M1	SEAL, OIL, 30x42x4.5	1	Y		20030320		KMYCB4BLS3C000001	
		24	91202-CD1-6910-M1	SEAL, OIL, 18.9x28x5	1	Y		20030320		KMYCB4BLS3C000001	
		25	91301-CB2-3030	O-RING, 107x2	1	Y		20030320		KMYCB4BLS3C000001	
		26	91308-CD1-7010-M1	O-RING, A	1	N		20030320		KMYCB4BLS3C000001	
		27	91309-CB2-7010-M1	O-RING, B	1	N		20030320		KMYCB4BLS3C000001	
		28	91317-CB2-0000	O-RING, 6x1.7	2	Y		20030320		KMYCB4BLS3C000001	
		29	S2101-06045-0A	BOLT, HEX, 6x45	3	Y		20030320		KMYCB4BLS3C000001	
		30	S3500-06010-0A	SCREW, PAN, 6x10	1	Y		20030320		KMYCB4BLS3C000001	
		31	S3600-06016-0A	SCREW, FLAT, 6x16	2	Y		20030320		KMYCB4BLS3C000001	
		32	S4510-12000	CIR CLIP, EXTERNAL, 12mm	1	N		20030320		KMYCB4BLS3C000001	
		33	S6120-60010-10	BEARING, BALL RADIAL 6001Z	1	N		20030320		KMYCB4BLS3C000001	