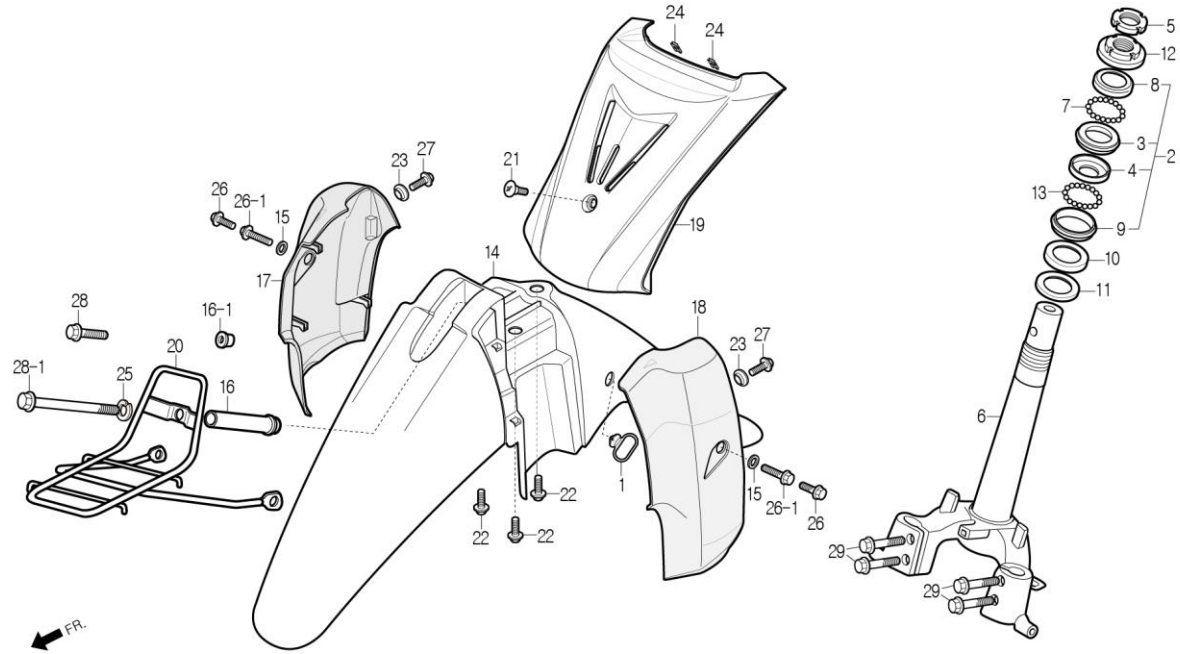


F-05

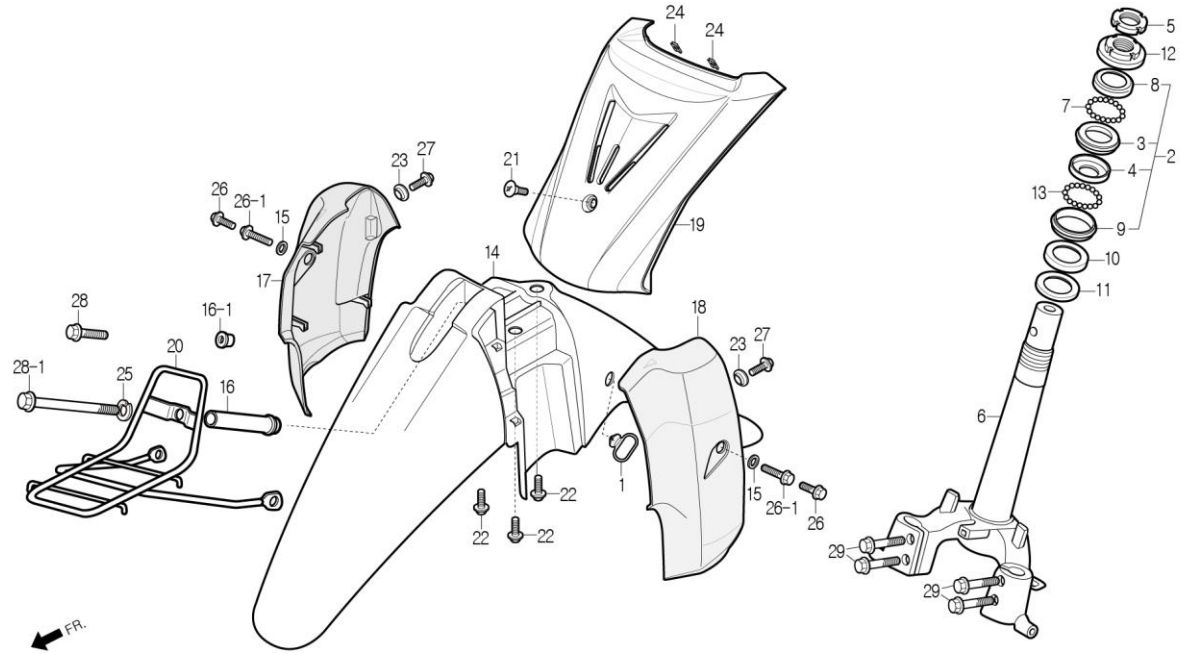
FRONT FENDER / TOP COVER / STEERING STEM



Service item	FRT	Ref No.	Part No.	Description	QTY	A/S	Exch	Start Date	End Date	Start FRM.No	End FRM.No
RACE, STEERING BALL (ONE OR ALL)	1.2	1	45451-BA5-0000	GROMMET, WIRE	1	Y		20030320		KMYCB4BLS3C000001	
RACE, STEERING BOTTOM CONE		2	5020A-CB2-0000	STEERING RACE SET	1	N	Y	20030320	20190917	KMYCB4BLS3C000001	
			5020A-CB5-0000-M1	STEERING RACE SET	1	Y		20190918			
STEM COMP., STEERING	1.5	3	50301-CB2-9000	RACE, STEERING TOP BALL	1	N	N	20030320	20190917	KMYCB4BLS3C000001	
			50301-CB5-0000-M1	RACE, STEERING TOP BALL	1	N		20190918			
RACE, STEERING TOP CONE	0.5	4	50302-CB2-9000	RACE, STEERING BOTTOM BALL	1	Y		20030320	20190917	KMYCB4BLS3C000001	
			50302-CB5-0000-M1	RACE, STEERING BOTTOM BALL	1	Y		20190918			
THREAD COMP., STRRING HEAD TOP		5	50306-CB3-0000	NUT, STEERING STEM LOCK	1	N	Y	20030320	20190411	KMYCB4BLS3C000001	
FENDER, FR.	0.5		50306-SZ3-0000-M1	NUT, STEERING STEM LOCK	1	Y		20190412			
		6	53200-CB4-0000	STEM COMP., STEERING	1	Y		20030320		KMYCB4BLS3C000001	
COVER, RH/LH FR.FORK	0.2	7	53210-CB3-7500	BALL ASS'Y, STEERING UPPER	1	Y		20030320		KMYCB4BLS3C000001	
		8	53211-CB2-9000	RACE, STEERING TOP CONE	1	N	N	20030320	20190917	KMYCB4BLS3C000001	
COVER, FR.TOP	0.1		53211-CB5-0000-M1	RACE, STEERING TOP CONE	1	N		20190918			
		9	53212-CB2-9000	RACE, STEERING BOTTOM CONE	1	N	N	20030320	20190917	KMYCB4BLS3C000001	
CARRIER, FR.	0.1		53212-CB5-0000-M1	RACE, STEERING BOTTOM CONE	1	N		20190918			
		10	53214-CB2-9000	DUST SEAL, STEERING	1	Y		20030320		KMYCB4BLS3C000001	
		11	53215-CB3-0000	WASHER., STEERING HEAD DUST-SEAL	1	Y		20030320		KMYCB4BLS3C000001	
		12	53220-CB3-0000	THREAD COMP., TOP	1	N	Y	20030320	20190811	KMYCB4BLS3C000001	
			53220-SZ3-0000-M1	THREAD COMP., TOP	1	Y		20190812			
		13	53220-CB3-7500	BALL ASS'Y, STRG UNDER	1	Y		20030320		KMYCB4BLS3C000001	
		14	61100-CB4-0000-1B	FENDER, FR.(I/BLUE)	1	Y		20030320		KMYCB4BLS3C000001	
			61100-CB4-0000-RD	FENDER, FR.(CO/RED)	1	Y		20030320	20050323	KMYCB4BLS3C000001	KMYCB4BLS5C002023

F-05

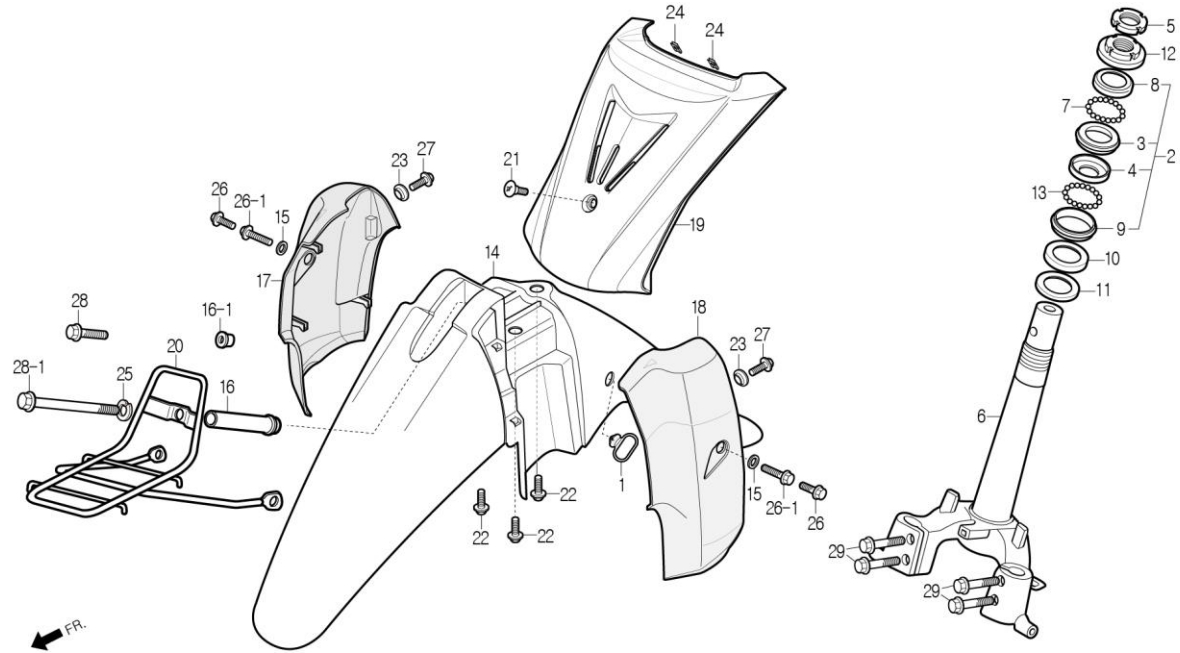
FRONT FENDER / TOP COVER / STEERING STEM



Service item	FRT	Ref No.	Part No.	Description	QTY	A/S	Exch	Start Date	End Date	Start FRM.No	End FRM.No
			61100-CB4-0000-SL	FENDER, FR.(SILVER)	1	Y		20030320	20110501	KMYCB4BLS3C000001	KMYCB4BLSBC004029
			61100-CB4-0000-UR	FENDER, FR.(S/RED)	1	Y		20040114		KMYCB4BLS4C001447	
			61100-CB4-0000-BK	FENDER, FR.(BLACK)	1	Y		20060406		KMYCB4BLS6C002244	
			61100-CB4-0000-WH	FENDER, FR.(WHITE)	1	Y		20110501		KMYCB4BLSBC004030	
		15	61104-CB4-0000	COLLAR, DISTANCE	2	Y		20030320		KMYCB4BLS3C000001	
		16	61105-CB4-0000	COLLAR, FR.FENDER SET.	1	Y		20090701		KMYCB4BLSAC003397	
		16-1	61106-CB4-RH00	COLLAR, FR.FENDER SETTING(Greece)	1	Y		20070418		KMYCB4BLS7C003070	
		17	61130-CB4-0000-IB	COVER, RH.FR.FORK(I/BLUE)	1	Y		20030320		KMYCB4BLS3C000001	
			61130-CB4-0000-RD	COVER, RH.FR.FORK(CO/RED)	1	Y		20030320	20050323	KMYCB4BLS3C000001	KMYCB4BLS5C002023
			61130-CB4-0000-SL	COVER, RH.FR.FORK(SILVER)	1	Y		20030320	20110501	KMYCB4BLS3C000001	KMYCB4BLSBC004029
			61130-CB4-0000-UR	COVER, RH.FR.FORK(S/RED)	1	Y		20040114		KMYCB4BLS4C001447	
			61130-CB4-0000-BK	COVER, RH.FR.FORK(BLACK)	1	Y		20060406		KMYCB4BLS6C002244	
			61130-CB4-0000-WH	COVER, RH.FR.FORK(WHITE)	1	Y		20110501		KMYCB4BLSBC004030	
		18	61135-CB4-0000-IB	COVER, LH.FR.FORK(I/BLUE)	1	Y		20030320		KMYCB4BLS3C000001	
			61135-CB4-0000-RD	COVER, LH.FR.FORK(CO/RED)	1	Y		20030320	20050323	KMYCB4BLS3C000001	KMYCB4BLS5C002023
			61135-CB4-0000-SL	COVER, LH.FR.FORK(SILVER)	1	Y		20030320	20110501	KMYCB4BLS3C000001	KMYCB4BLSBC004029
			61135-CB4-0000-UR	COVER, LH.FR.FORK(S/RED)	1	Y		20040114		KMYCB4BLS4C001447	
			61135-CB4-0000-BK	COVER, LH.FR.FORK(BLACK)	1	Y		20060406		KMYCB4BLS6C002244	
			61135-CB4-0000-WH	COVER, LH.FR.FORK(WHITE)	1	Y		20110501		KMYCB4BLSBC004030	
		19	64310-CB4-0000-IB	COVER, FR.TOP(I/BLUE)	1	Y		20030320		KMYCB4BLS3C000001	
			64310-CB4-0000-RD	COVER, FR.TOP(CO/RED)	1	Y		20030320	20050323	KMYCB4BLS3C000001	KMYCB4BLS5C002023
			64310-CB4-0000-SL	COVER, FR.TOP(SILVER)	1	Y		20030320	20110501	KMYCB4BLS3C000001	KMYCB4BLSBC004029
			64310-CB4-0000-UR	COVER, FR.TOP(S/RED)	1	Y		20040114		KMYCB4BLS4C001447	

F-05

FRONT FENDER / TOP COVER / STEERING STEM



Service item	FRT	Ref No.	Part No.	Description	QTY	A/S	Exch	Start Date	End Date	Start FRM.No	End FRM.No
			64310-CB4-0000-BK	COVER, FR.TOP(BLACK)	1	Y		20060406		KMYCB4BLS6C002244	
			64310-CB4-0000-WH	COVER, FR.TOP(S/WHITE)	1	Y		20110501		KMYCB4BLSBC004030	
		20	81100-CB4-0000	CARRIER, FR.	1	Y		20090701		KMYCB4BLSAC003397	
		21	90110-SE5-0000	SCREW, SPECIAL, 6x14	1	Y		20030320		KMYCB4BLS3C000001	
		22	90111-SE5-1000	BOLT, FLANGE, 6mm	3	Y		20030320		KMYCB4BLS3C000001	
		23	90512-HD2-8900	WASHER, 6mm	2	Y		20030320		KMYCB4BLS3C000001	
		24	90677-SE5-0030	NUT, CLIP, 5mm	2	Y		20030320		KMYCB4BLS3C000001	
		25	S4111-08800	WASHER, SPRING, 8mm	1	Y		20160502		KMYCB4BLSHC005344	
		26	S5701-06012-00	BOLT, FLANGE, 6x12	2	Y		20070418		KMYCB4BLS7C003070	
		26-1	S5701-06016-00	BOLT, FLANGE, 6x16	2	Y	Y	20090701	20160501	KMYCB4BLSAC003397	KMYCB4BLSHC005343
			90091-CB4-0000	BOLT, FLANGE, 6x16(Coating)	2	Y		20160502		KMYCB4BLSHC005344	
		27	S5701-06012-08	BOLT, FLANGE, 6x12	2	N	Y	20060406	20100430	KMYCB4BLS6C002244	KMYCB4BLSAC003718
			S5701-06012-00	BOLT, FLANGE, 6x12	2	Y		20100501		KMYCB4BLSAC003719	
		28	S5701-08016-08	BOLT, FLANGE, 8x16(Greece)	1	N	Y	20060406	20100430	KMYCB4BLS6C002244	KMYCB4BLSAC003718
			S5701-08016-00	BOLT, FLANGE, 8x16	1	Y		20100501		KMYCB4BLSAC003719	
		28-1	90104-CB4-DH00	BOLT, FLANGE, 8x125	1	Y		20090701		KMYCB4BLSAC003397	
		29	S5801-10045-08	BOLT, FLANGE, 10x45	4	Y	Y	20030320	20100430	KMYCB4BLS3C000001	KMYCB4BLSAC003718
			S5801-10045-00	BOLT, FLANGE, 10x45	4	Y		20100501		KMYCB4BLSAC003719	