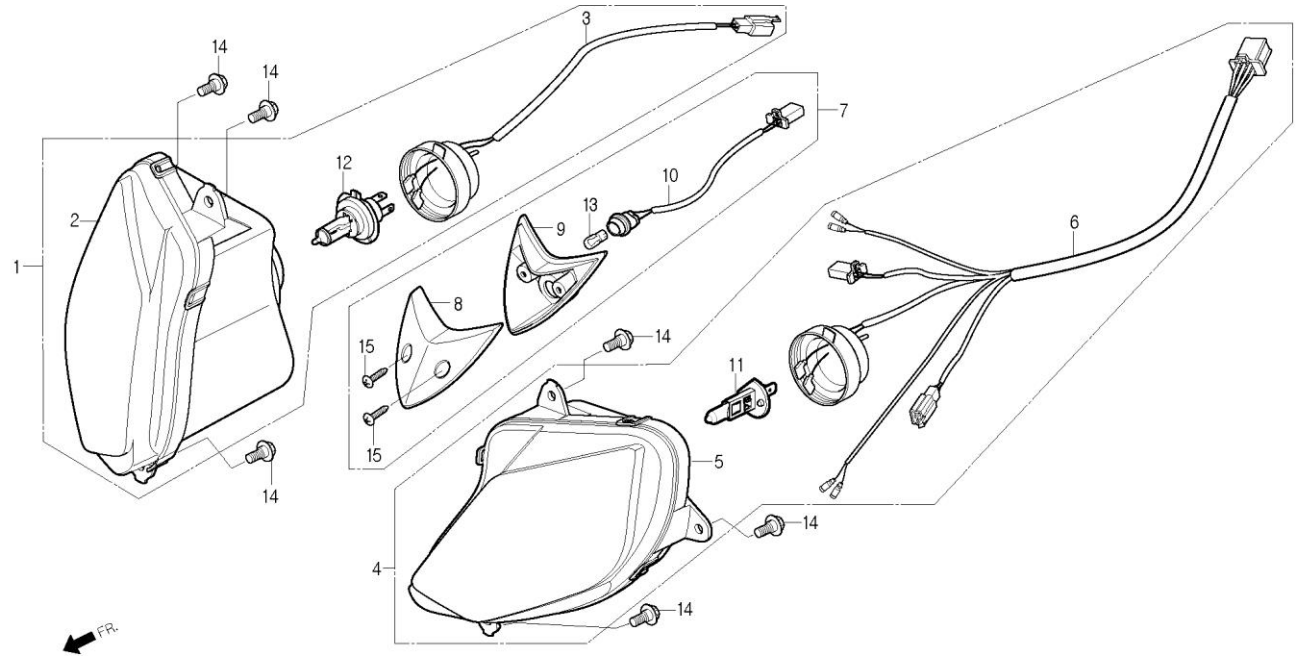


F-01

HEADLIGHT



Service item	FRT	Ref No.	Part No.	Description	QTY	A/S	Exch	Start Date	End Date	Start FRM.No	End FRM.No
HEADLIGHT ASS'Y	0.5	1	33100-BA8-RZ00-M1	HEADLIGHT ASS'Y, RH.	1	Y		20070425		KMYBA8BLS7C000001	
· BULB, HEADLIGHT		2	33120-BA8-RZ00	UNIT, RH.HEADLIGHT	1	N		20070425		KMYBA8BLS7C000001	
· BULB, WEDGE BASE		3	33130-BA8-RZ00-M1	SOCKET COMP., RH.HEADLIGHT	1	N		20070425		KMYBA8BLS7C000001	
· UNIT, HEADLIGHT		4	33150-BA8-RZ00-M1	HEADLIGHT ASS'Y, LH.	1	Y		20070425		KMYBA8BLS7C000001	
		5	33170-BA8-RZ00	UNIT, LH.HEADLIGHT	1	N		20070425		KMYBA8BLS7C000001	
		6	33180-BA8-RZ00-M1	SOCKET COMP., LH.HEADLIGHT	1	N		20070425		KMYBA8BLS7C000001	
		7	33200-BA8-0000-M1	LIGHT ASS'Y, POSITION	1	Y		20070425		KMYBA8BLS7C000001	
		8	33201-BA8-0000	LENS, POSITION LIGHT	1	N		20070425		KMYBA8BLS7C000001	
		9	33202-BA8-0000	BASE, POSITION LIGHT	1	N		20070425		KMYBA8BLS7C000001	
		10	33210-BA8-0000	SOCKET COMP., POSITION LIGHT	1	N		20070425		KMYBA8BLS7C000001	
		11	34901-SA7-0000	BULB, HEAD LIGHT(12V 55W)	1	Y		20070425		KMYBA8BLS7C000001	
		12	34901-SZ1-0000	BULB, HEAD LIGHT(12V 55W)	1	Y		20070425		KMYBA8BLS7C000001	
		13	34902-SA1-RB00	BULB, WEDGE BASE(12V 5W)	1	Y		20070425		KMYBA8BLS7C000001	
		14	90111-SE5-1000	BOLT, FLANGE, 6mm	6	Y		20070425		KMYBA8BLS7C000001	
		15	S3901-24480	SCREW, TAPPING, 4x16	2	N		20070425		KMYBA8BLS7C000001	