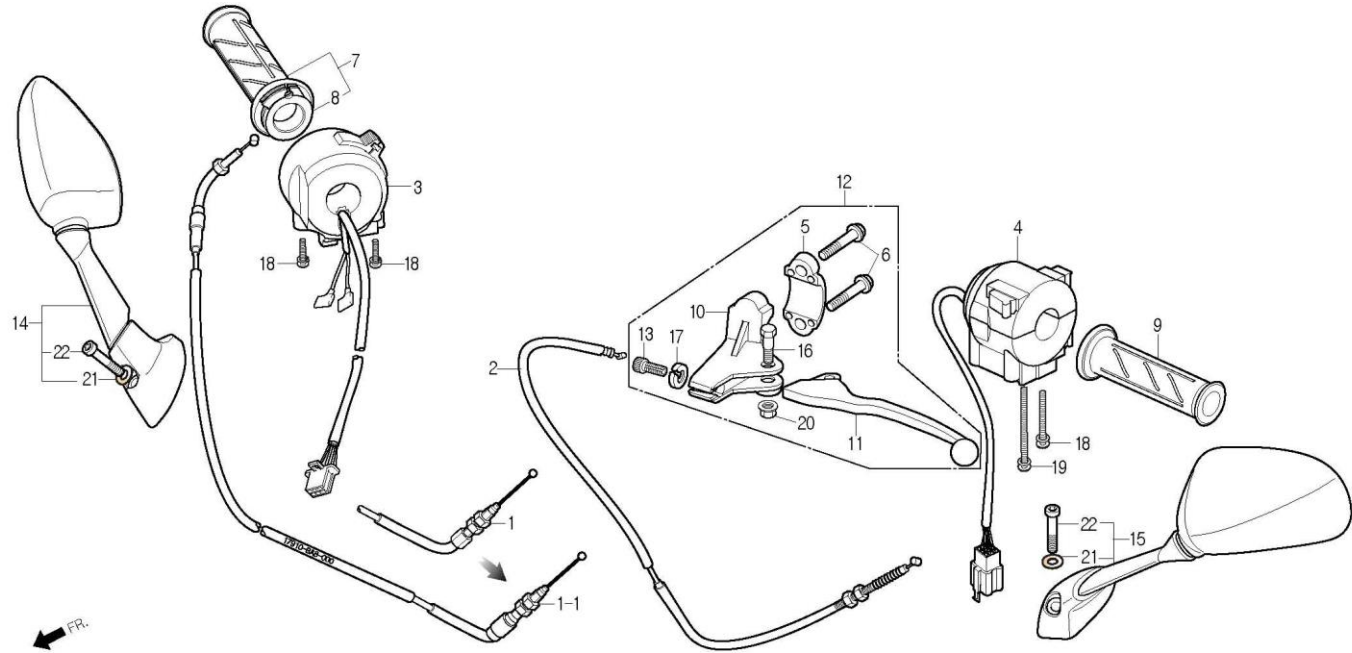


# F-03

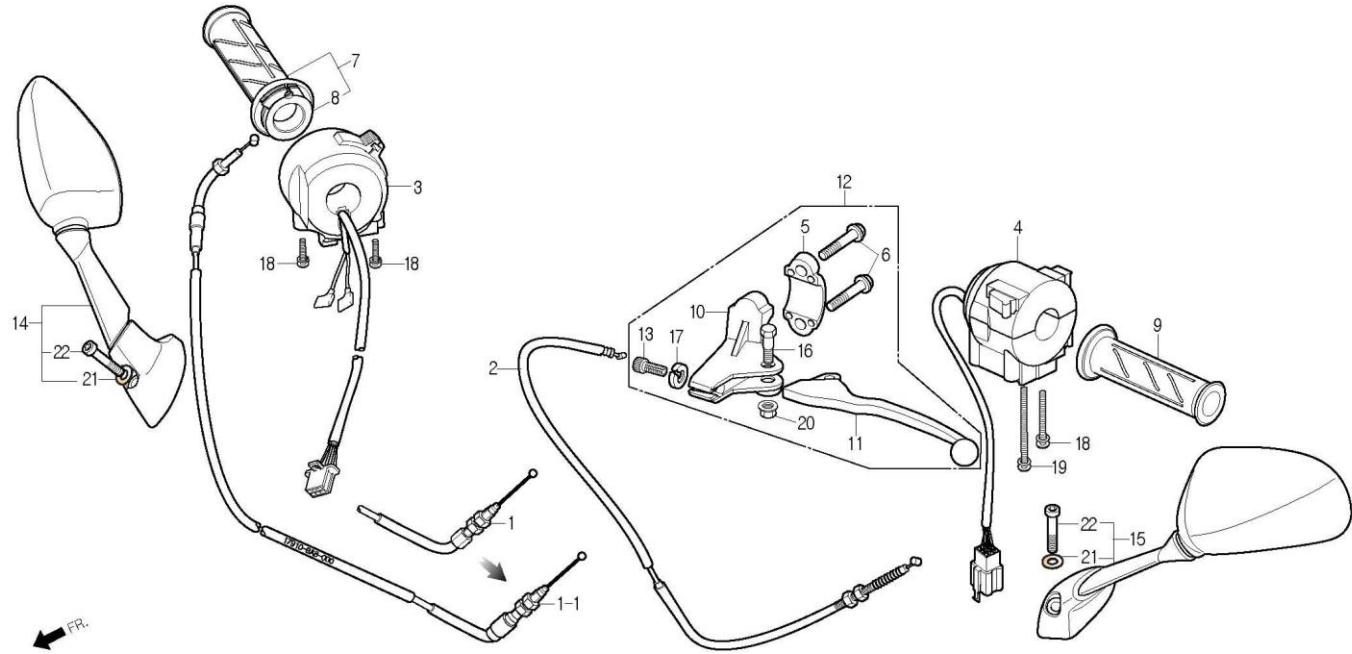
## HANDLE LEVER / SWITCH / CABLE



| Service item                    | FRT | Ref No. | Part No.          | Description                     | QTY | A/S | Exch | Start Date | End Date | Start FRM.No      | End FRM.No        |
|---------------------------------|-----|---------|-------------------|---------------------------------|-----|-----|------|------------|----------|-------------------|-------------------|
| CABLE COMP., THROTTLE           | 0.4 | 1       | 17910-BA4-R300    | CABLE COMP., THROTTLE           | 1   | N   | Y    | 20070425   | 20100831 | KMYBA8BLS7C000001 | KMYBA8BLSBC003814 |
|                                 |     | 1-1     | 17910-BZ1-0010    | CABLE COMP.,THROTTLE            | 1   | Y   |      | 20100901   |          | KMYBA8BLSBC003815 |                   |
| CABLE COMP., CLUTCH             | 0.2 | 2       | 22870-BA4-0000-M1 | CABLE COMP., CLUTCH             | 1   | N   | Y    | 20070425   | 20090409 | KMYBA8BLS7C000001 | KMYBA8BLS9C003021 |
|                                 |     |         | 22870-BA8-0000-M1 | CABLE COMP., CLUTCH             | 1   | Y   |      | 20090410   |          | KMYBA8BLS9C003022 |                   |
| SWITCH ASS'Y, LIGHTING START    | 0.5 | 3       | 35150-BA4-RB00    | SWITCH ASS'Y, LIGHTING START    | 1   | Y   | N    | 20070425   | 20150930 | KMYBA8BLS7C000001 | KMYBA8BLSGC005500 |
|                                 |     |         | 35150-BZ1-0000-M1 | SW.ASS'Y, HAZ.ST.               | 1   | Y   |      | 20151001   |          | KMYBA8BLSGC005501 |                   |
| GRIP COMP., RH.                 | 0.1 | 4       | 35200-BA4-R310    | SWITCH ASS'Y, WINKER            | 1   | Y   |      | 20070425   |          | KMYBA8BLS7C000001 |                   |
| GRIP, LH.HANDLE                 | 0.1 | 5       | 45517-BA6-0060    | HOLDER, MASTER CYLINDER         | 1   | N   |      | 20070425   |          | KMYBA8BLS7C000001 |                   |
|                                 |     | 6       | 45518-BA4-0000-M1 | BOLT, MASTER CYLINDER HOLDER    | 2   | N   |      | 20070425   |          | KMYBA8BLS7C000001 |                   |
| LEVER COMP., LH.STEERING HANDLE | 0.1 | 7       | 53140-BA4-0000    | GRIP COMP., RH.                 | 1   | Y   |      | 20070425   |          | KMYBA8BLS7C000001 |                   |
|                                 |     | 8       | 53141-BA4-0000    | PIPE, THROTTLE GRIP             | 1   | N   |      | 20070425   |          | KMYBA8BLS7C000001 |                   |
|                                 |     | 9       | 53166-BA4-0000    | GRIP, LH.HANDLE                 | 1   | Y   |      | 20070425   |          | KMYBA8BLS7C000001 |                   |
|                                 |     | 10      | 53172-BA8-0000    | BRACKET, LH.HANDLE LEVER        | 1   | N   |      | 20070425   |          | KMYBA8BLS7C000001 |                   |
|                                 |     | 11      | 53178-BA7-9500    | LEVER COMP., LH.STEERING HANDLE | 1   | Y   |      | 20070425   |          | KMYBA8BLS7C000001 |                   |
|                                 |     | 12      | 53190-BA8-0000    | LEVER ASS'Y, LH.HANDLE          | 1   | Y   |      | 20070425   |          | KMYBA8BLS7C000001 |                   |
|                                 |     | 13      | 53192-BA8-0000    | BOLT, CLUTCH CABLE ADJUST       | 1   | N   |      | 20070425   |          | KMYBA8BLS7C000001 |                   |
|                                 |     | 14      | 88110-BA8-0000-M1 | MIRROR ASS'Y, RH.BACK           | 1   | N   | Y    | 20070425   | 20090709 | KMYBA8BLS7C000001 | KMYBA8BLSAC003373 |
|                                 |     |         | 88110-BZ1-0000-M1 | MIRROR ASS'Y, RH.BACK           | 1   | Y   |      | 20090710   |          | KMYBA8BLSAC003374 |                   |
|                                 |     | 15      | 88120-BA8-0000-M1 | MIRROR ASS'Y, LH.BACK           | 1   | N   | Y    | 20070425   | 20090709 | KMYBA8BLS7C000001 | KMYBA8BLSAC003373 |
|                                 |     |         | 88120-BZ1-0000-M1 | MIRROR ASS'Y, LH.BACK           | 1   | Y   |      | 20090710   |          | KMYBA8BLSAC003374 |                   |
|                                 |     | 16      | 90114-BA4-0000    | BOLT, HANDLE LEVER PIVOT        | 1   | N   |      | 20070425   |          | KMYBA8BLS7C000001 |                   |

# F-03

## HANDLE LEVER / SWITCH / CABLE



| Service item | FRT | Ref No. | Part No.       | Description         | QTY | A/S | Exch | Start Date | End Date | Start FRM.No      | End FRM.No        |
|--------------|-----|---------|----------------|---------------------|-----|-----|------|------------|----------|-------------------|-------------------|
|              |     | 17      | 90321-BA8-0000 | NUT, FIXING         | 1   | N   |      | 20070425   |          | KMYBA8BLS7C000001 |                   |
|              |     | 18      | S3892-05028-08 | SCREW, WASHER, 5x28 | 3   | N   | Y    | 20070425   | 20100430 | KMYBA8BLS7C000001 | KMYBA8BLSAC003562 |
|              |     |         | S3892-05028-00 | SCREW, WASHER, 5x28 | 3   | Y   |      | 20100501   |          | KMYBA8BLSAC003563 |                   |
|              |     | 19      | S3892-05045-08 | SCREW, WASHER, 5x45 | 1   | N   | Y    | 20070425   | 20100430 | KMYBA8BLS7C000001 | KMYBA8BLSAC003562 |
|              |     |         | S3892-05045-00 | SCREW, WASHER, 5x45 | 1   | Y   |      | 20100501   |          | KMYBA8BLSAC003563 |                   |
|              |     | 20      | S4050-06080    | NUT, FLANGE, 6mm    | 1   | Y   |      | 20070425   |          | KMYBA8BLS7C000001 |                   |
|              |     | 21      | S4101-08700    | WASHER, PLAIN, 8mm  | 2   | Y   |      | 20070425   |          | KMYBA8BLS7C000001 |                   |
|              |     | 22      | S6700-08045-08 | BOLT, SOCKET, 8x45  | 2   | N   |      | 20070425   |          | KMYBA8BLS7C000001 |                   |