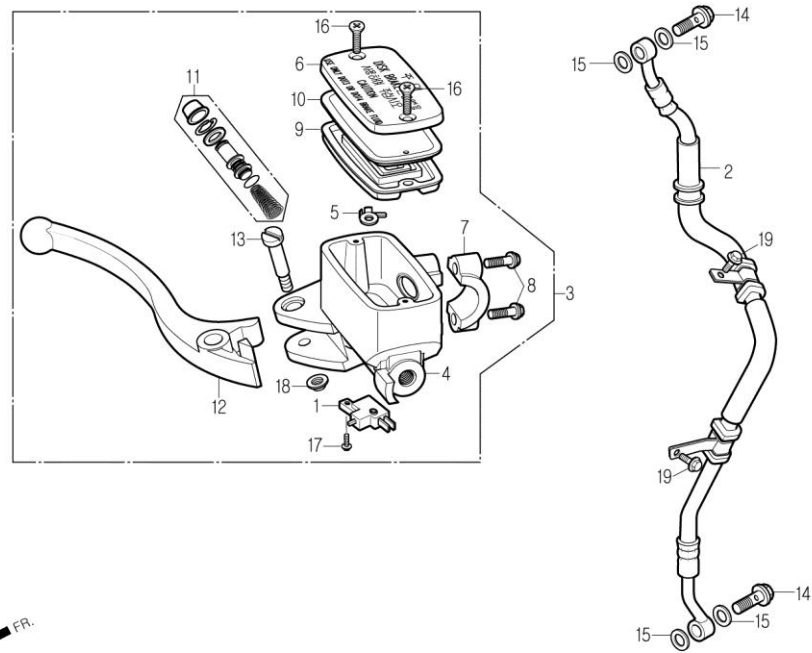


F-04

FRONT BRAKE MASTER CYLINDER



Service item	FRT	Ref No.	Part No.	Description	QTY	A/S	Exch	Start Date	End Date	Start FRM.No	End FRM.No
SWITCH ASS'Y, FR.STOP	0.1	1	35340-BA4-0000-M1	SWITCH ASS'Y, FR.STOP	1	Y		20070425		KMYBA8BLS7C000001	
· LEVER COMP., RH.HANDLE		2	45126-BA8-0000	HOSE COMP., FR.BRAKE	1	Y		20070425		KMYBA8BLS7C000001	
· DIAPHRAGM		3	45500-BA8-0000	CYLINDER ASS'Y, FR.MASTER	1	Y		20070425		KMYBA8BLS7C000001	
		4	45501-BA8-0000	BODY, MASTER CYLINDER	1	N		20070425		KMYBA8BLS7C000001	
HOSE COMP., FR.BRAKE	0.4	5	45512-BA4-0000-M1	PLATE, PROTECTOR	1	N		20070425		KMYBA8BLS7C000001	
· CYLINDER ASS'Y, FR.MASTER		6	45513-BA4-0000-M1	CAP, MASTER CYLINDER	1	N		20070425		KMYBA8BLS7C000001	
· PISTON SET, MASTER CYLINDER		7	45517-BA4-0000-M1	HOLDER, MASTER CYLINDER	1	N		20070425		KMYBA8BLS7C000001	
		8	45518-BA4-0000-M1	BOLT, MASTER CYLINDER HOLDER	2	N		20070425		KMYBA8BLS7C000001	
		9	45520-BA4-0000-M1	DIAPHRAGM	1	N		20070425		KMYBA8BLS7C000001	
		10	45521-BA4-0000-M1	PLATE, DIAPHRAGM	1	N		20070425		KMYBA8BLS7C000001	
		11	45530-BA4-0000	PISTON SET, MASTER CYLINDER	1	N		20070425		KMYBA8BLS7C000001	
		12	53175-BA4-0000-M1	LEVER COMP., RH.HANDLE	1	Y		20070425		KMYBA8BLS7C000001	
		13	90113-BA4-0000-M1	BOLT, HANDLE LEVER	1	N		20070425		KMYBA8BLS7C000001	
		14	90145-BA7-9000	OIL BOLT, 10x22	2	Y		20070425		KMYBA8BLS7C000001	
		15	90545-BA6-0000	WASHER, OIL BOLT	4	Y		20070425		KMYBA8BLS7C000001	
		16	S3600-04012-1G	SCREW, FLAT, 4x12	2	N		20070425		KMYBA8BLS7C000001	
		17	S3893-04012-17	SCREW, WASHER, 4x12	1	N		20070425		KMYBA8BLS7C000001	
		18	S4050-06000	NUT, FLANGE, 6mm	1	N		20070425		KMYBA8BLS7C000001	
		19	S5701-06012-07	BOLT, FLANGE, 6x12	2	Y		20070425		KMYBA8BLS7C000001	